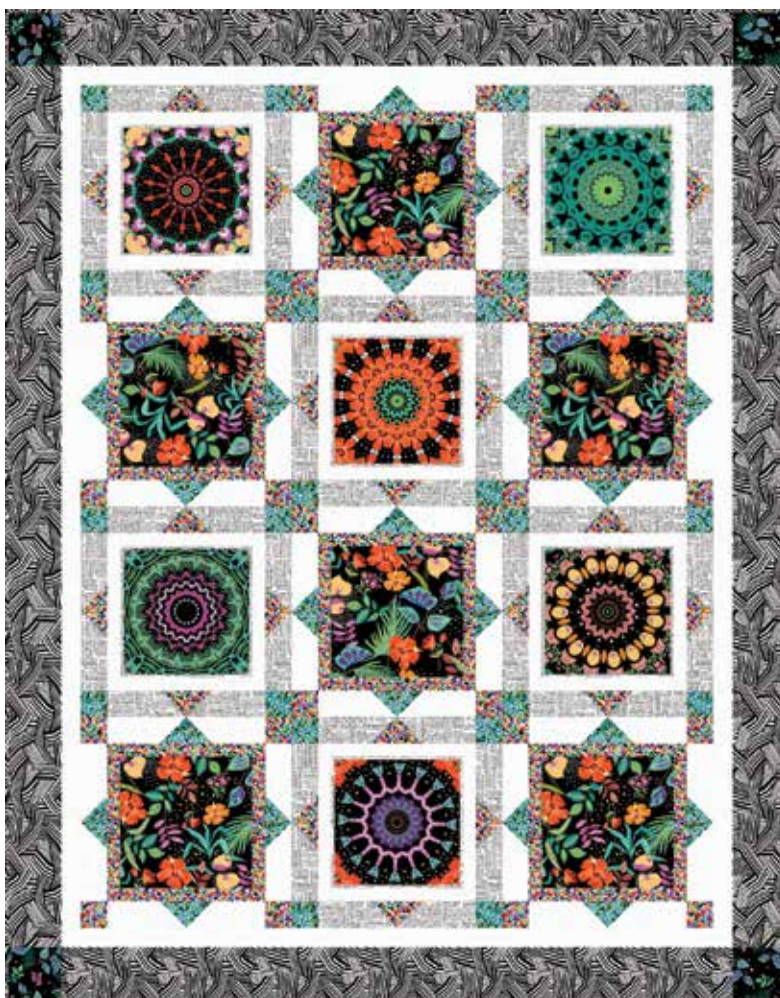


# Hothouse Magic

• A Free Project Sheet •  
• NOT FOR RESALE •

QUILT 2



Featuring fabrics from the **Hothouse Magic** collection by **Chelsea DesignWorks** for **STUDIO e fabrics**

## Fabric Requirements

- (A) 7376-99 .....  $\frac{2}{3}$  yard (0.61 m)  
 (B) 1351-Pigment White\*\* 1  $\frac{1}{2}$  yards (1.38 m)  
 (C) 7368-99 .....  $\frac{2}{3}$  yard (0.61 m)  
 (D) 7374-08 .....  $\frac{3}{4}$  yard (0.69 m)  
 (E) 7370-99 .....  $\frac{1}{2}$  yard (0.46 m)  
 (F) 7372-09 .....  $\frac{2}{3}$  yard (0.61 m)  
 (G) 7375-09 ..... 1  $\frac{1}{2}$  yards (1.38 m)\*  
 (H) 7369-99 .....  $\frac{1}{4}$  yard (0.23 m)

## Backing

- 7371-99 ..... 3  $\frac{3}{4}$  yards (3.43 m)

## Additional Supplies Needed

- Batting 67" x 83"  
 (170.18 cm x 210.82 cm)  
 (Recommended:  
 Air Lite® Colour Me 100% Cotton)  
 Piecing and sewing thread  
 Quilting and sewing supplies

\* Includes Binding

\*\* Just Color! Collection

## Project Information

- Design by Heidi Pridemore  
 Finished Quilt Size 59" x 75"  
 (149.86 cm x 190.50 cm)  
 Skill Level: Advanced Beginner



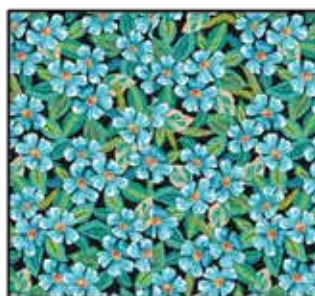
## Fabrics in the Collection



Hothouse Flowers  
Black - 7368-99



Tropical Leaves  
Black - 7369-99



Small Floral  
Black - 7370-99



Mirrored Hexie  
Black - 7371-99



Newsprint  
White - 7372-09



Written Script  
Black - 7373-99



Diagonal Geo  
Red - 7374-08



Geo  
Black/White - 7375-09



10-Inch Blocks  
Black - 7376-99



36-Inch Panel  
Black - 7377P-99

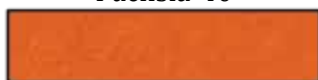
Select Fabric from  
Peppered Cottons



Fuchsia  
Fuchsia-40



Lime  
1351-Lime



Orange  
1351-Orange

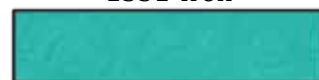
Select Fabrics from  
Just Color!



Iron  
1351-Iron



Pigment White  
1351-Pigment White



Teal  
1351-Teal

## Cutting

### Cutting Instructions

*Please note: All strips are cut across the width of fabric (WOF) from selvage to selvage edge unless otherwise noted.*

WOF= Width of Fabric • LOF = Length of Fabric

#### **Fabric A (7376-99 10-Inch Blocks – Black):**

- Fussy cut (6) 10 ½" squares, each centered on a block.

#### **Fabric B (1351-Pigment White Just Color! – Pigment White), cut:**

- (8) 2 ½" x WOF strips, sub-cut (48) 2 ½" x 6 ½" strips.
- (3) 2" x WOF strips, sub-cut (12) 2" x 10 ½" strips.
- (4) 2" x WOF strips, sub-cut (12) 2" x 13 ½" strips.
- (4) 2" x WOF strips. Sew the strips together end to end with diagonal seams and cut (2) 2" x 64 ½" strips.
- (3) 2" x WOF strips. Sew the strips together end to end with diagonal seams and cut (2) 2" x 51 ½" strips.

#### **Fabric C (7368-99 Hothouse Flowers – Black), cut:**

- (2) 10 ½" x WOF strips, sub-cut (6) 10 ½" squares.

#### **Fabric D (7374-08 Diagonal Geo – Red), cut:**

- (5) 2 ½" x WOF strips, sub-cut (72) 2 ½" squares.
- (3) 1 ½" x WOF strips, sub-cut (12) 1 ½" x 10 ½" strips.
- (4) 1 ½" x WOF strips, sub-cut (12) 1 ½" x 12 ½" strips.

#### **Fabric E (7370-99 Small Floral – Black), cut:**

- (5) 2 ½" x WOF strips, sub-cut (72) 2 ½" squares.

#### **Fabric F (7372-09 Newsprint – White), cut:**

- (8) 2 ½" x WOF strips, sub-cut (48) 2 ½" x 6 ½" strips.

#### **Fabric G (7375-09 Geo – Black/White), cut:**

- (4) 4 ½" x WOF strips. Sew the strips together end to end with diagonal seams and cut (2) 4 ½" x 67 ½" strips.
- (3) 4 ½" x WOF strips. Sew the strips together end to end with diagonal seams and cut (2) 4 ½" x 51 ½" strips.
- (7) 2 ½" x WOF strips for the binding.

#### **Fabric H (7369-99 Tropical Leaves – Black), cut:**

- (1) 4 ½" x WOF strip, sub-cut (4) 4 ½" squares.

#### **Backing (7371-99 Mirrored Hexie – Black), cut:**

- (2) 67" x WOF strips. Sew the strips together and trim to 67" x 83" to make the back.

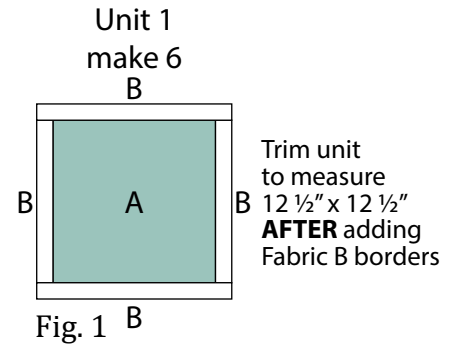
## Sewing

Sew using a  $\frac{1}{4}$ " seam allowance with right sides together (RST) unless otherwise indicated. Always press towards the darker fabric while assembling, unless otherwise noted by the arrows.

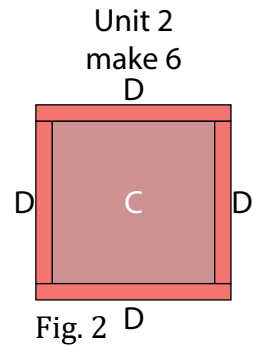
### Block Assembly

**Note: Pay attention to the fabric and unit orientations when assembling the various components.**

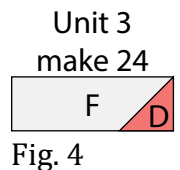
1. Sew (1) 2" x 10  $\frac{1}{2}$ " Fabric B strip to each side of (1) 10  $\frac{1}{2}$ " Fabric A square. Sew (1) 2" x 13  $\frac{1}{2}$ " Fabric B strip to the top and to the bottom of the Fabric A square to make (1) Unit 1 square (Fig. 1). **Trim the block to measure 12  $\frac{1}{2}$ " x 12  $\frac{1}{2}$ ".** Repeat to make (6) Unit 1 squares total.



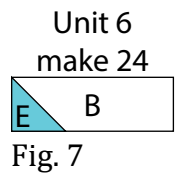
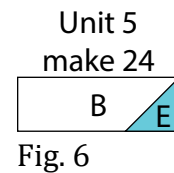
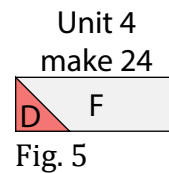
2. Sew (1) 1  $\frac{1}{2}$ " x 10  $\frac{1}{2}$ " Fabric D strip to each side of (1) 10  $\frac{1}{2}$ " Fabric C square. Sew (1) 1  $\frac{1}{2}$ " x 12  $\frac{1}{2}$ " Fabric D strip to the top and to the bottom of the Fabric C square to make (1) Unit 2 square (Fig. 2).



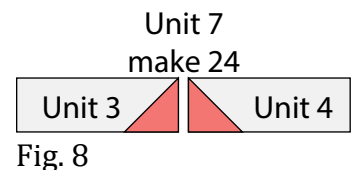
3. Place (1) 2  $\frac{1}{2}$ " Fabric D square on the right side of (1) 2  $\frac{1}{2}$ " x 6  $\frac{1}{2}$ " Fabric F strip, right sides together (Fig. 3). Sew across the diagonal of the square from the upper right corner to the lower left corner (Fig. 3). Flip open the triangle formed and press. Trim away the excess fabric from behind the triangle, leaving a  $\frac{1}{4}$ " seam allowance to make (1) Unit 3 strip (Fig. 4). Repeat to make (24) Unit 3 strips total.



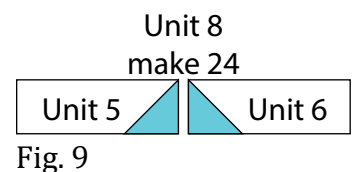
4. Repeat Step 3 and refer to Figures 5-7 for fabric identification, placement and seam direction to make (24) Unit 4 strips, (24) Unit 5 strips and (24) Unit 6 strips.



5. Sew (1) Unit 3 strip to the left end of (1) Unit 4 strip, Fabric D ends together, to make (1) Unit 7 strip (Fig. 8). Repeat to make (24) Unit 7 strips total.



6. Sew (1) Unit 5 strip to the left end of (1) Unit 6 strip, Fabric E ends together, to make (1) Unit 8 strip (Fig. 9). Repeat to make (24) Unit 8 strips total.





7. Sew (1) 2 ½" Fabric E square to each end of (1) Unit 7 strip to make the top row. Repeat to make the bottom row. Sew (1) Unit 7 strip to each side of (1) Unit 1 square to make the middle row. Sew together the (3) rows lengthwise to make (1) 16 ½" Block One square (Fig. 10). Repeat to make (6) Block One squares total.

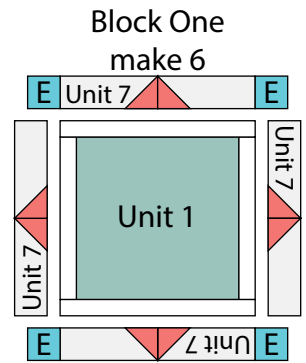


Fig. 10

8. Repeat Step 7 and refer to Figure 11 for component identification, placement and orientation to make (6) Block Two squares.

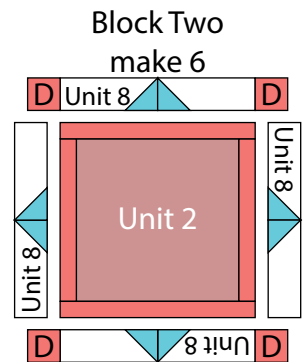


Fig. 11

9. Sew (1) Block One square to each side of (1) Block Two square to make Row One (Fig. 12). Repeat to make Row Three.

10. Sew (1) Block Two square to each side of (1) Block One square to make Row Two (Fig. 12). Repeat to make Row Four.

11. Sew together the (4) Rows from Steps 9-10, lengthwise and in numerical order from top to bottom, to make the 48 ½" x 64 ½" Center Block (Fig. 12).

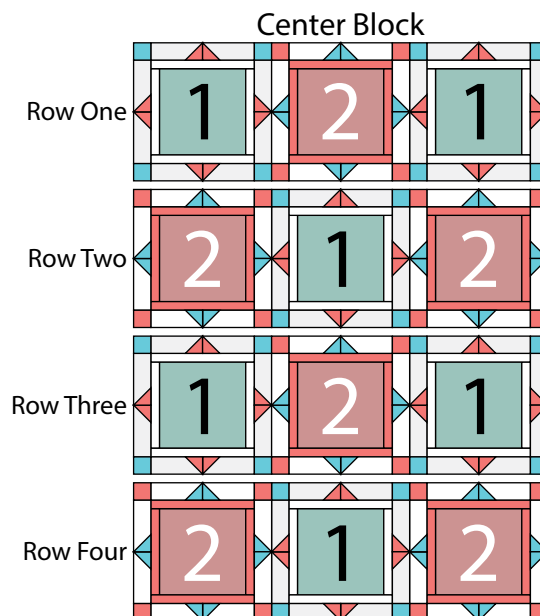


Fig. 12

## Quilt Top Assembly

*(Follow the Quilt Layout while assembling the quilt top.)*

12. Sew (1) 2" x 64 ½" Fabric B strip to each side of the Center Block. Sew (1) 2" x 51 ½" Fabric B strip to the top and to the bottom of the Center Block.

13. Sew (1) 4 ½" x 67 ½" Fabric G strip to each side of the Center Block.

14. Sew (1) 4 ½" Fabric H square to each end of (1) 4 ½" x 51 ½" Fabric G strip. Repeat to make a second strip. Sew the strips to the top and to the bottom of the Center Block to make the quilt top.

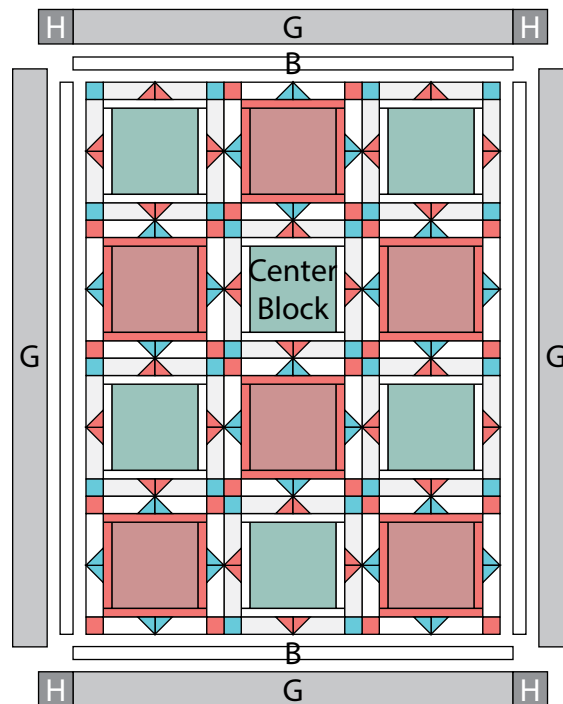
## Layering, Quilting and Finishing

15. Press the quilt top and 67" x 83" backing well. Layer backing (wrong side up), batting, pressed quilt top (right side up) and baste. Quilt as desired and trim excess batting and backing when quilting is complete.

## Binding

16. Cut the ends of the (7) Fabric G binding strips at a 45-degree angle and sew end to end to make (1) continuous piece of binding. Fold in half lengthwise and press wrong sides together.

17. Sew the binding to the front of the quilt, raw edges together. Turn the folded edge to the back, and hand stitch in place.



Quilt Layout

Every effort has been made to ensure that all projects are error free. All the information is presented in good faith, however no warranty can be given nor results guaranteed as we have no control over the execution of instructions. Therefore, we assume no responsibility for the use of this information or damages that may occur as a result. When errors are brought to our attention, we make every effort to correct and post a revision as soon as possible. Please make sure to check [www.studioefabrics.net](http://www.studioefabrics.net) for pattern updates prior to starting the project. We also recommend that you test the project prior to cutting for kits. Finally, all free projects are intended to remain free to you and are **not for resale**.